

Collaborative Restoration of Coastal Wetlands

February 20, 2024

Ron Brockmeyer

Environmental Scientist

Bureau of Environmental Sciences



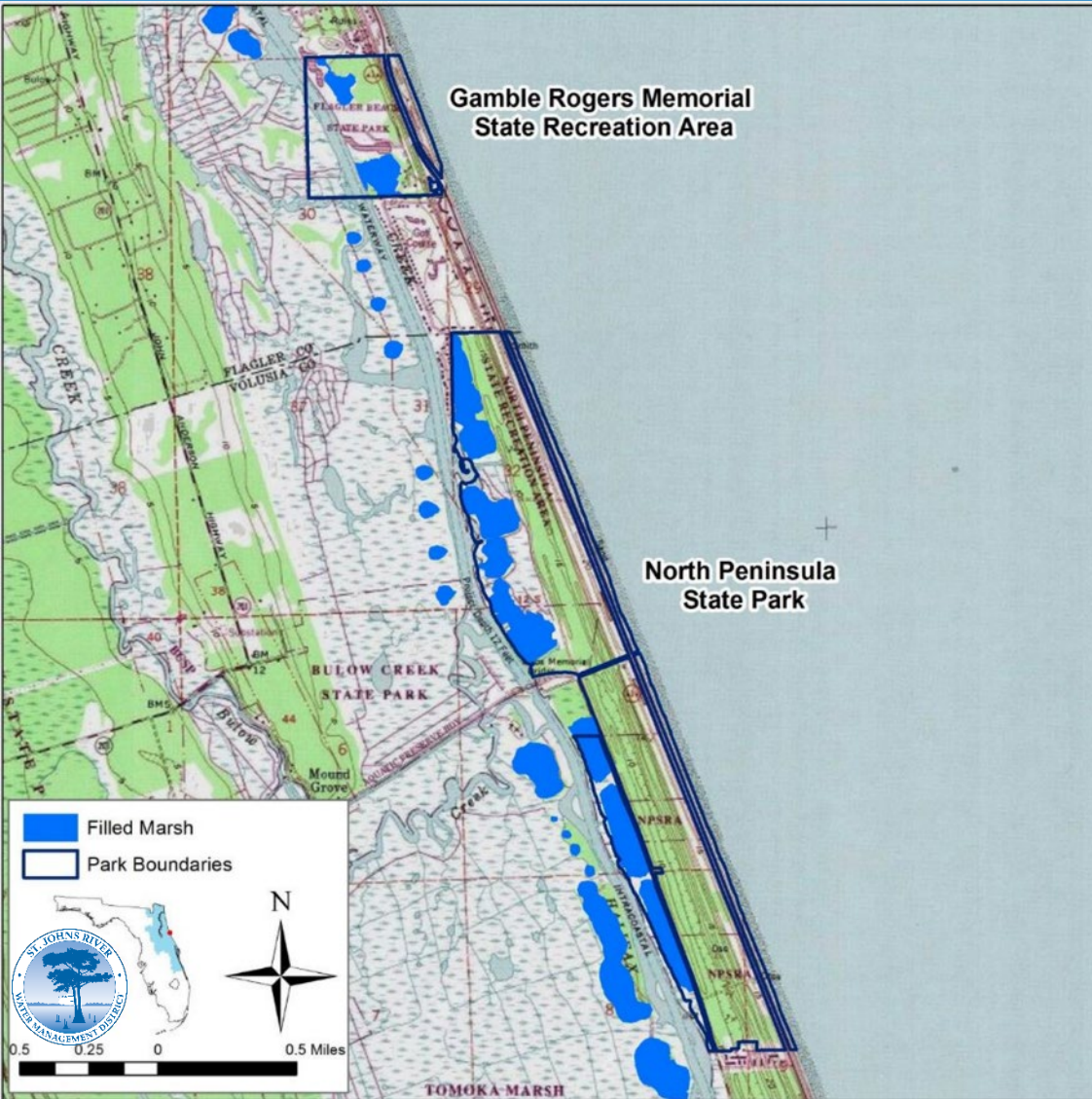
St. Johns River
Water Management District

Coastal Wetland Impacts

- **Agriculture (grazing, other cultivation, firewood, charcoal)**
- **Oil field development**
- **Filling (sometimes with dredging)**
- **Ditching**
- **Impounding**

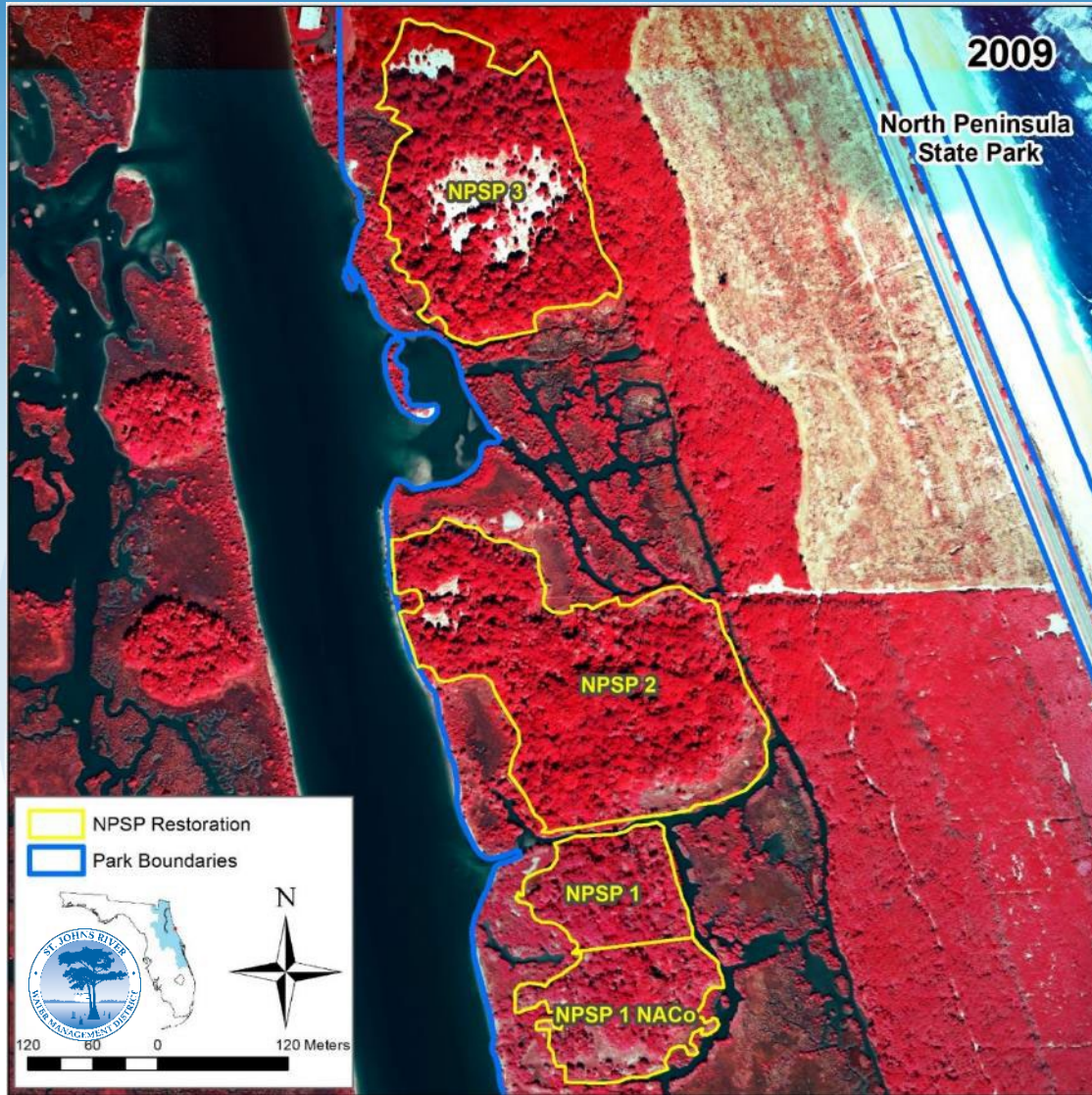


Dredge Spoil Removal



St. Johns River
Water Management District

North Peninsula State Park Restoration



St. Johns River
Water Management District

North Peninsula State Park Restoration



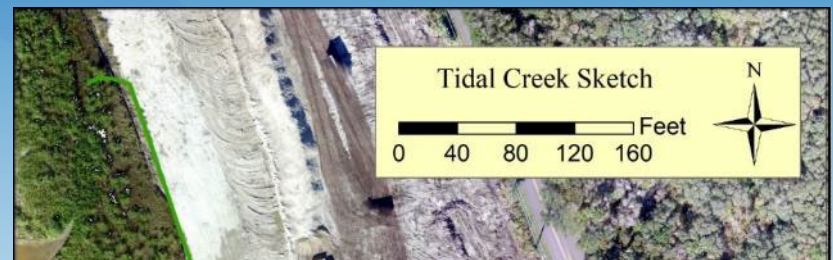
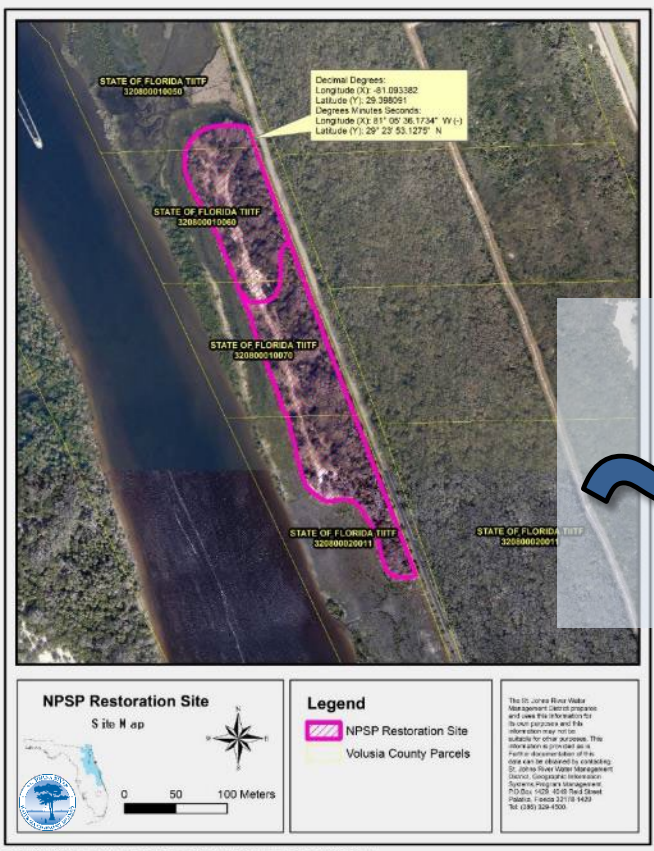
St. Johns River
Water Management District

North Peninsula State Park Restoration

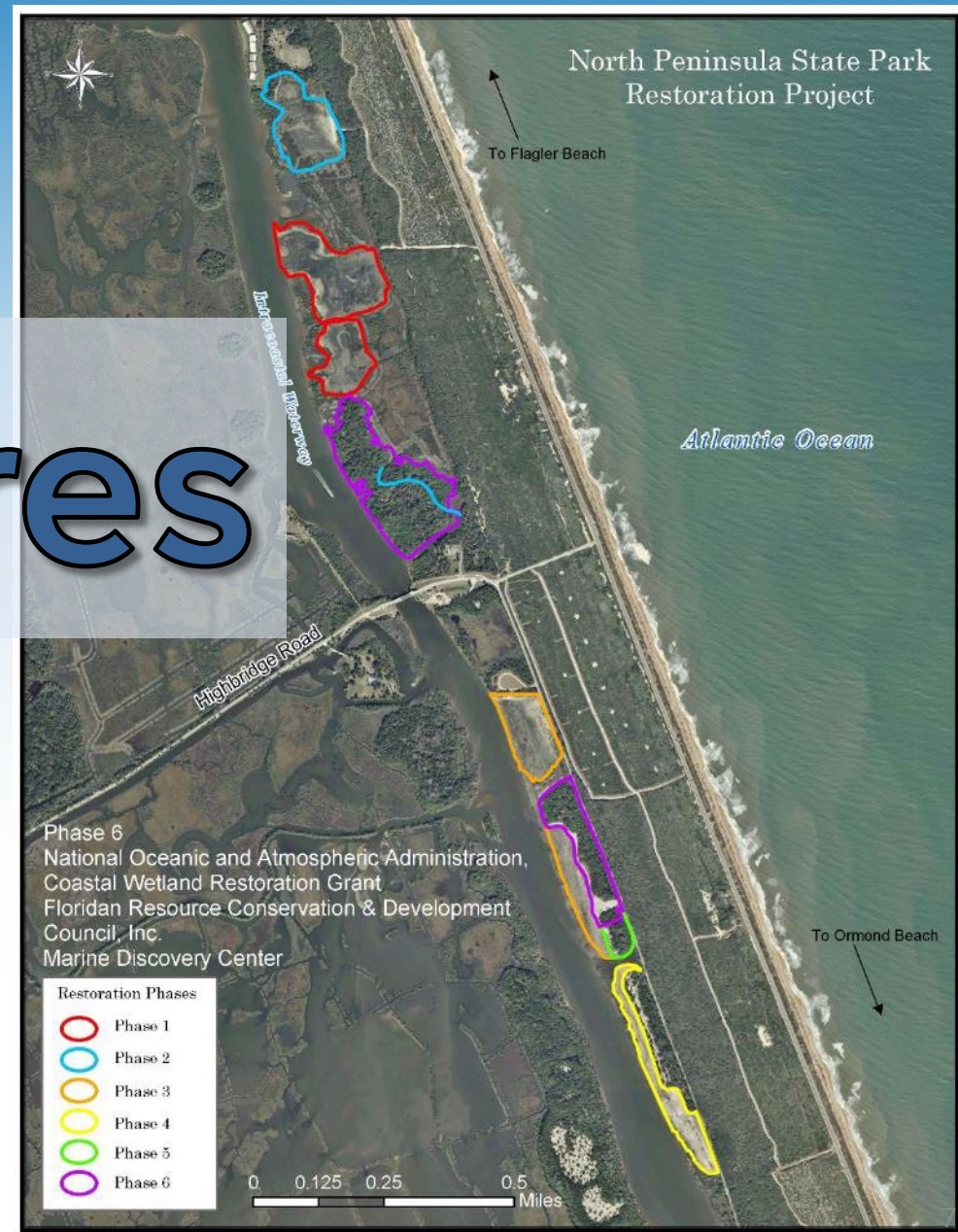


St. Johns River
Water Management District

North Peninsula State Park Restoration

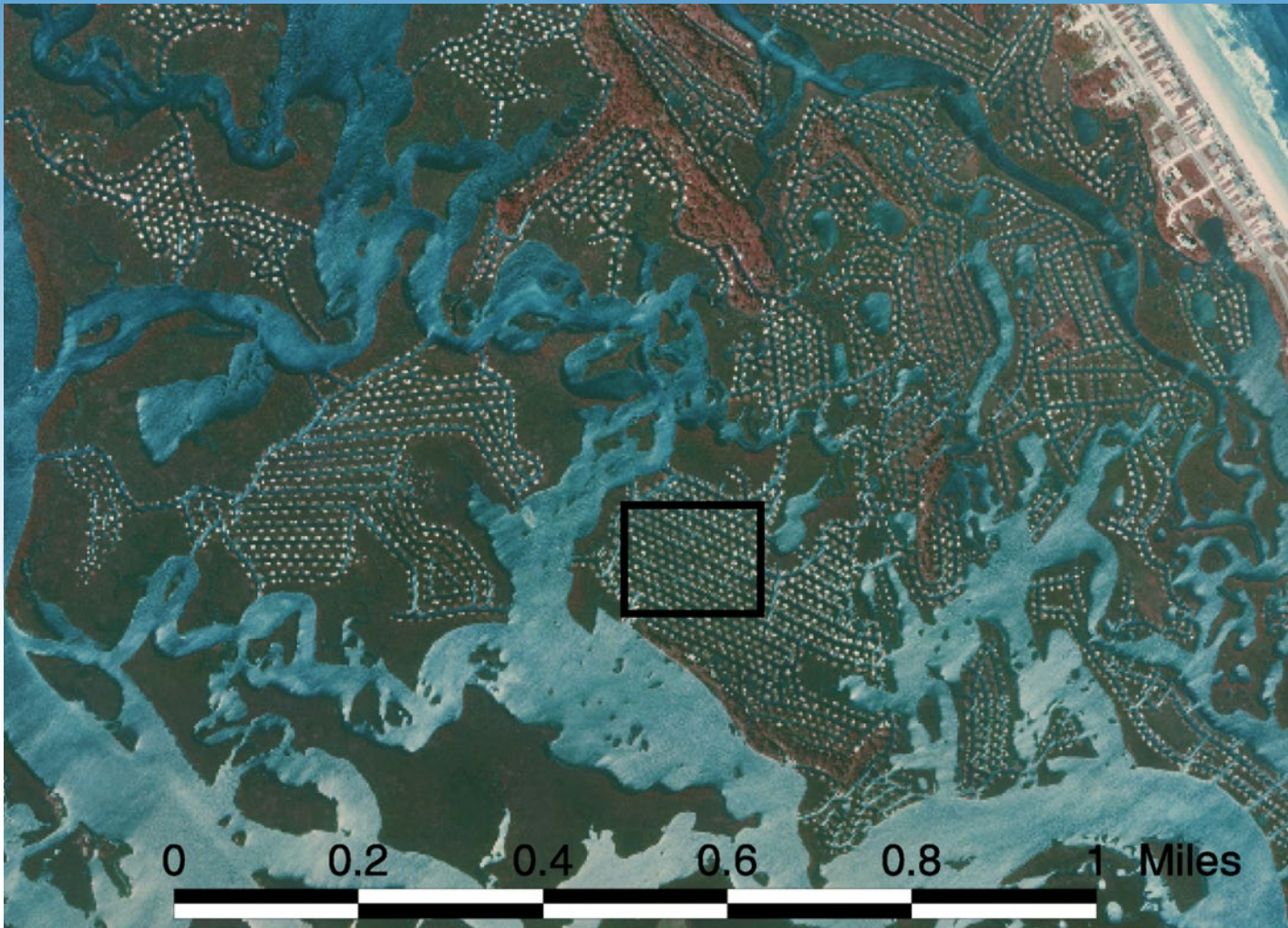


~100 acres



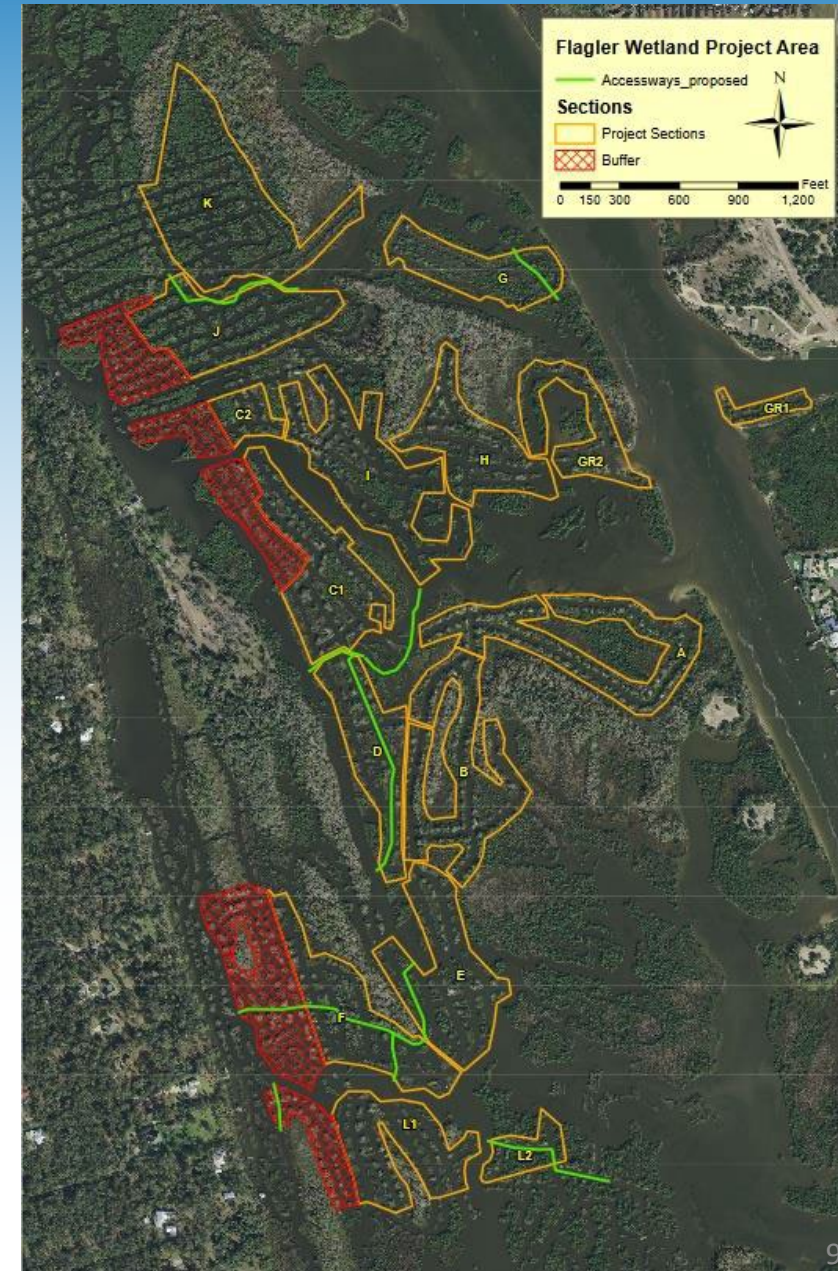
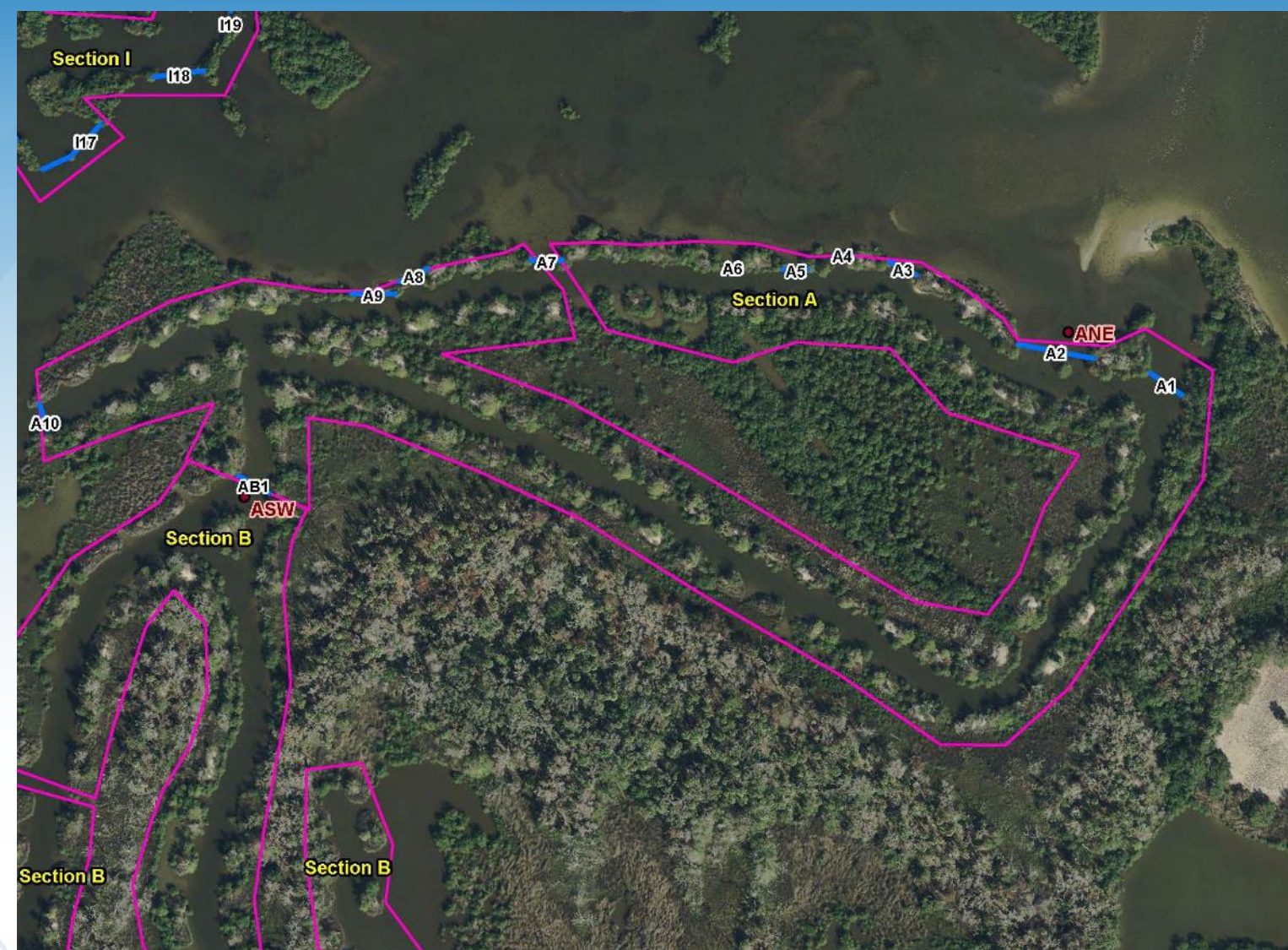
St. Johns River
 Water Management District

Dragline-impacted Wetland Restoration



St. Johns River
Water Management District

Flagler Coastal Wetland Restoration



St. Johns River
Water Management District

Flagler Coastal Wetland Restoration

Pre-condition
spoil piles and ditches



June 2019

Leveling restored areas



Areas returned to wetland elevation



Sept 2019



St. Johns River
Water Management District

Flagler Coastal Wetland Restoration



March 2021

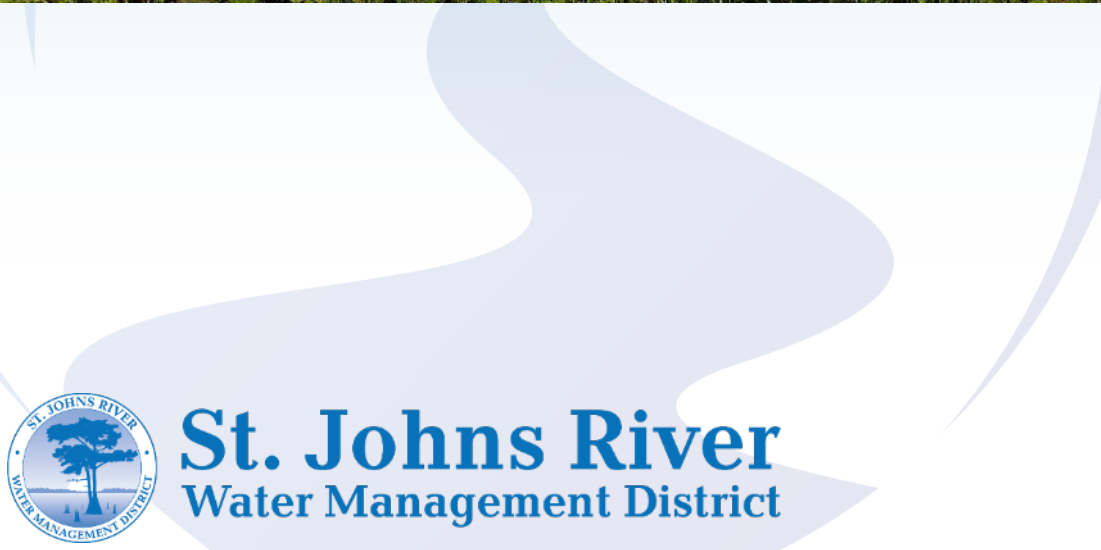


March 2022



St. Johns River
Water Management District

Flagler Coastal Wetland Restoration



Dragline-impacted Wetland Restoration

Ditches near C-8 Impoundment
January 2008



~800 acres



Ditches near C-8 Impoundment
November 2018



St. Johns River
Water Management District

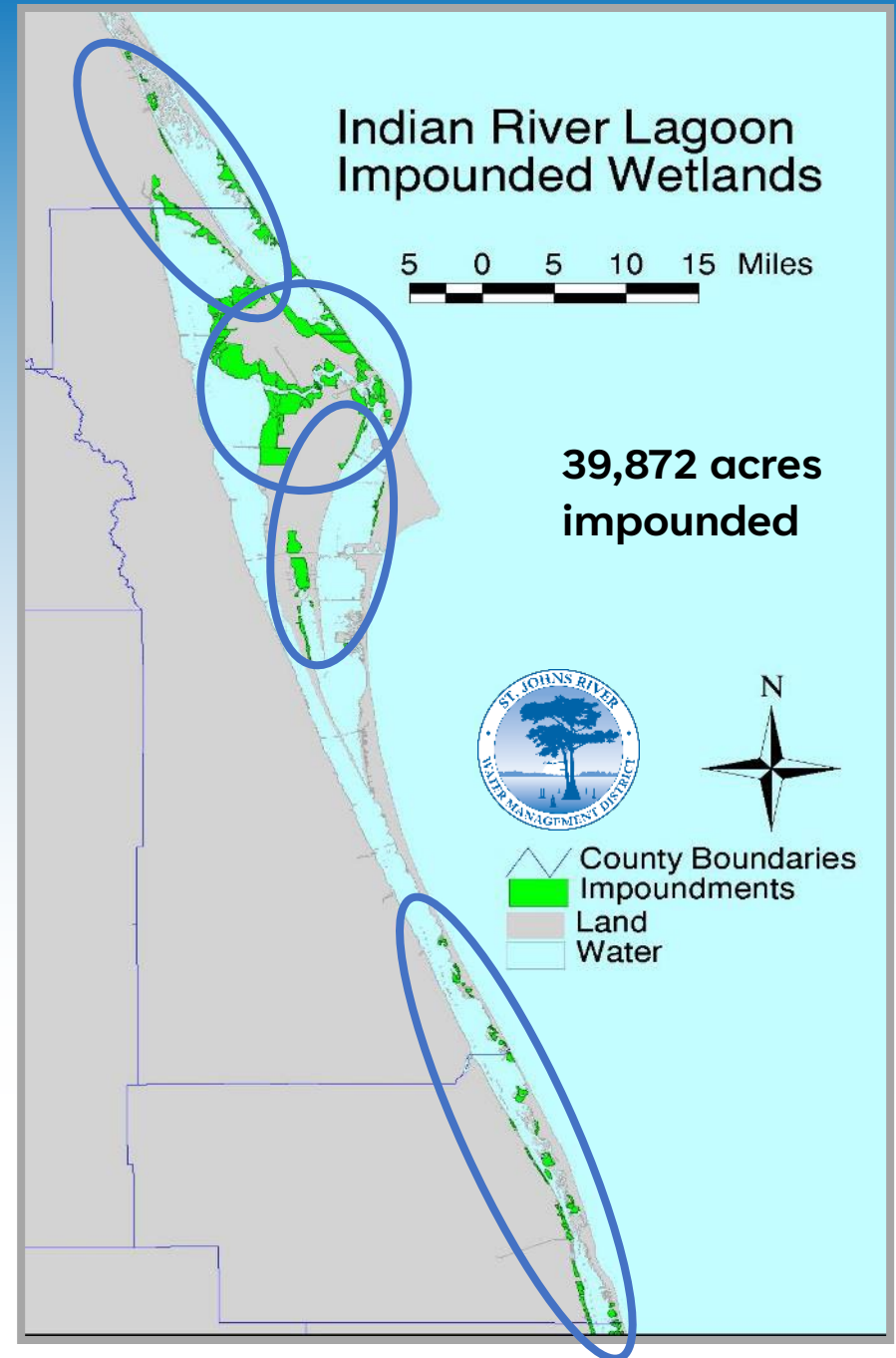
Impoundments



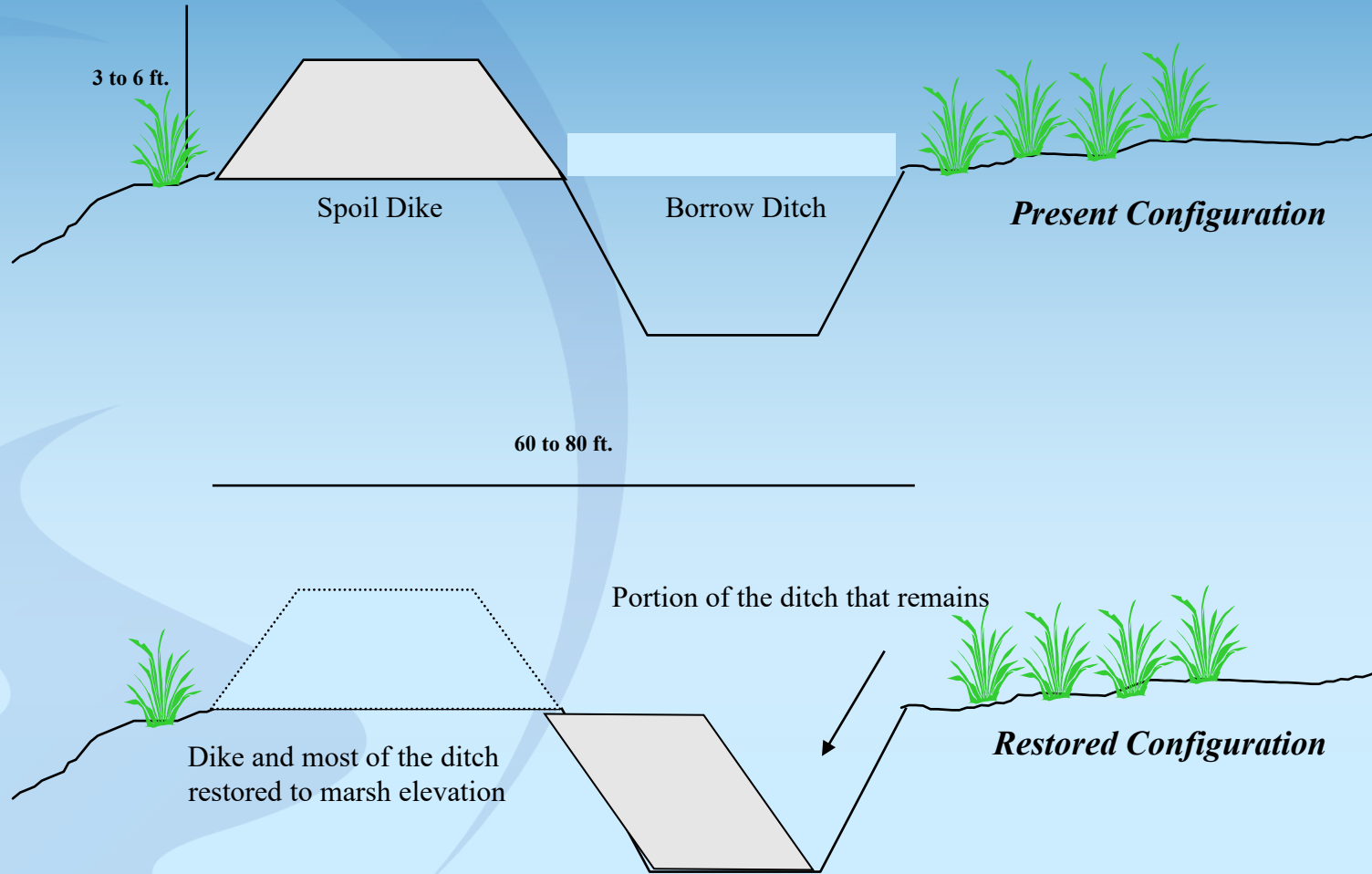
Coastal Wetland Solutions



Target:	38,980 acres
Reconnected:	27,616 acres
Breached:	1,153 acres
Restored:	3,255 acres
Remaining:	6,956 acres



Dike Removal Technique



Impoundment Dike Removal



St. Johns River
Water Management District

Impoundment Dike Removal

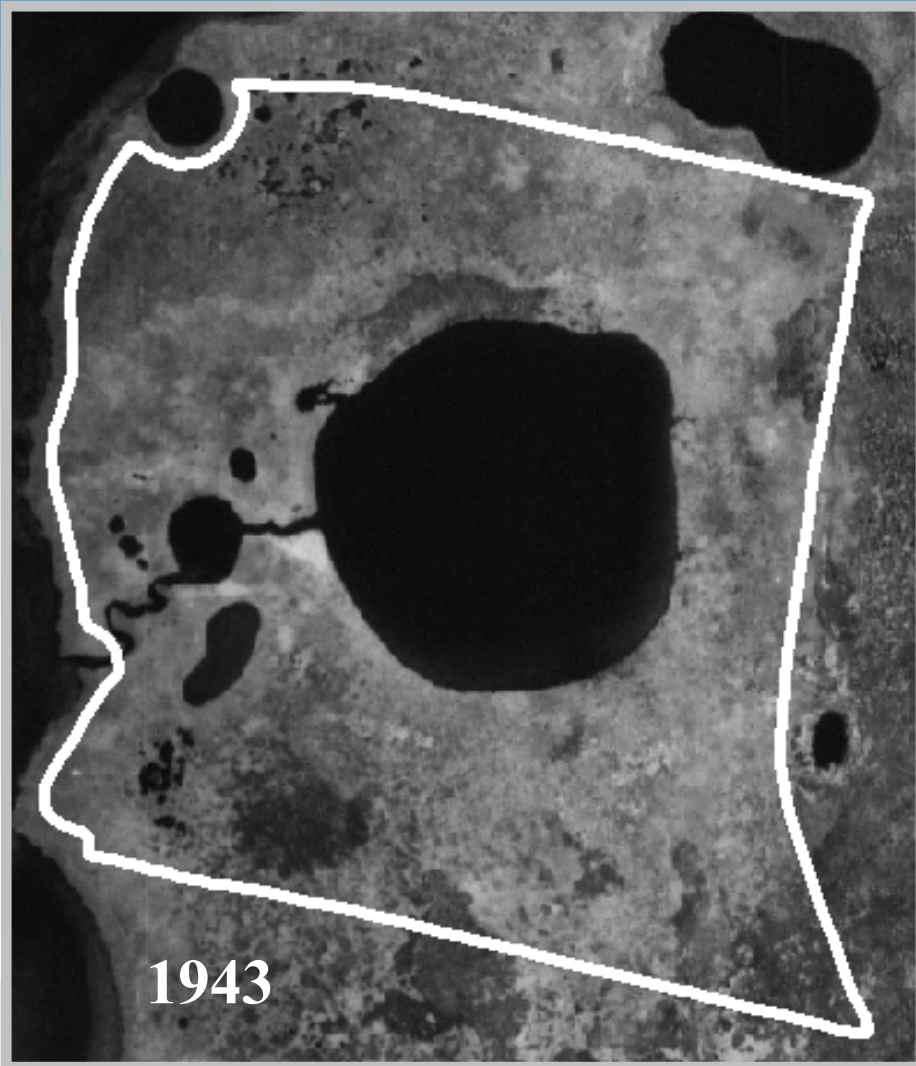


~43 miles



St. Johns River
Water Management District

Photo Comparison of T-10-D



1943



Project Area Map 2013
T-10-D Impoundment

- Part 1 plots
Method
- Mixed Fill
 - Outside Fill
 - Pumped Fill
 - T-10-D

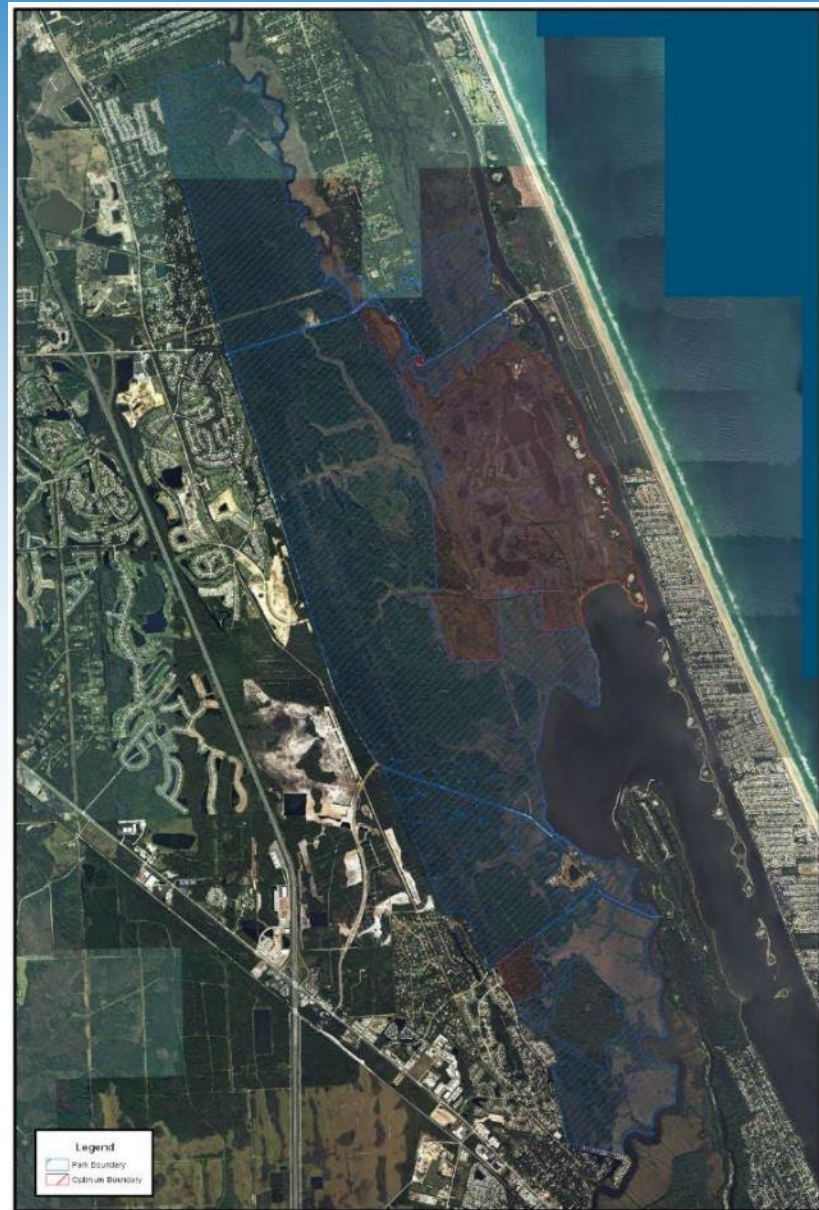
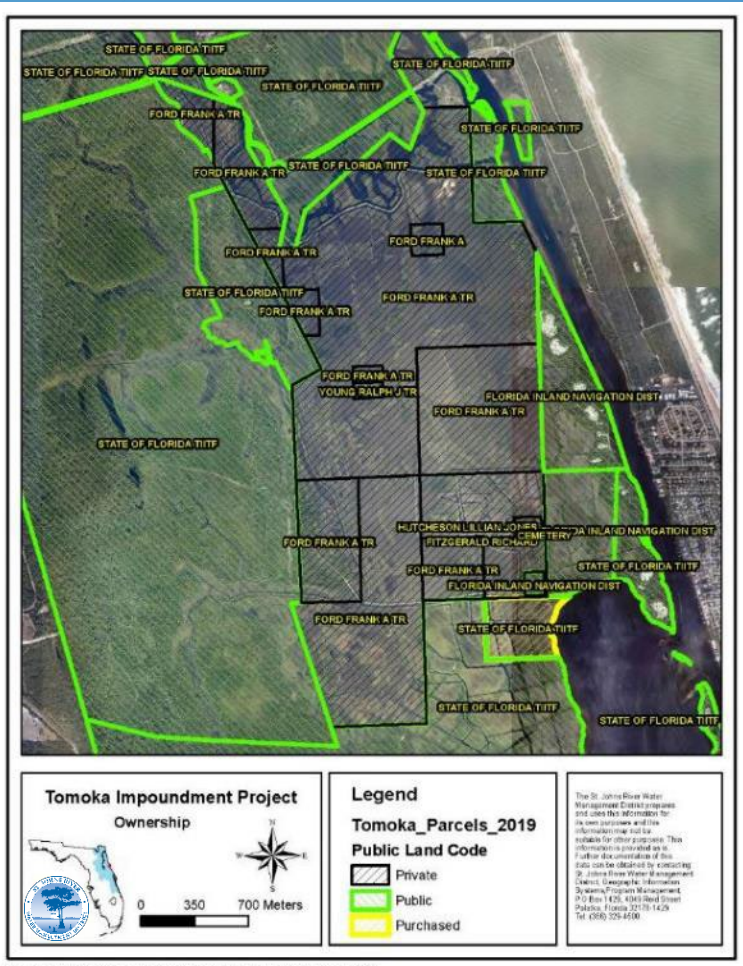


St. Johns River
Water Management District

Filling Subsided Wetlands



Tomoka Impoundment Area Restoration

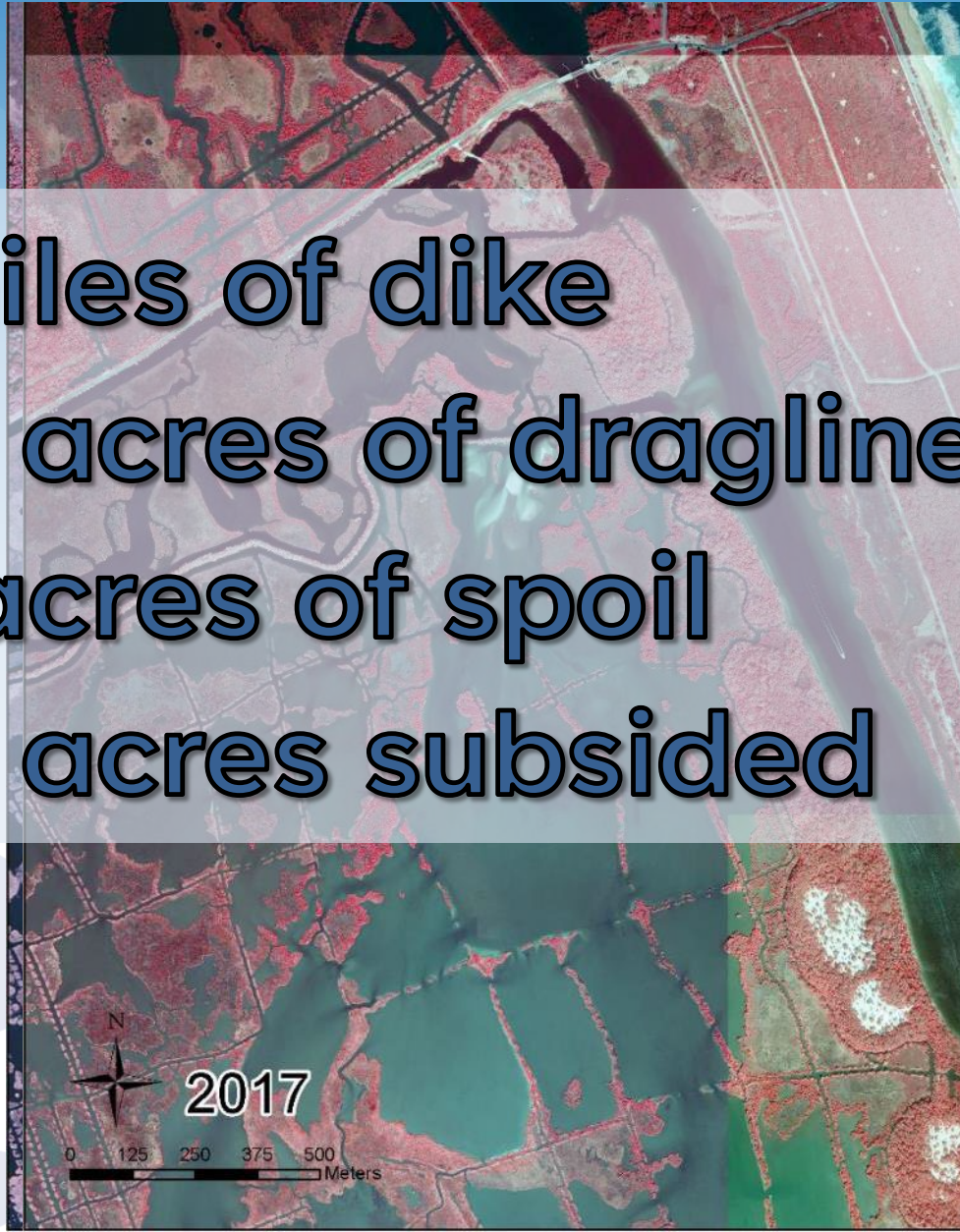


St. Johns River
Water Management District

Author: Source: X:\EDM\Projects\Disturbed_Areas\nd\Tomoka_imp_update.mxd, Time: 5/18/2020 3:17:07 PM

Tomoka Impoundment Area Restoration

~7 miles of dike
~200 acres of dragline ditch
~20 acres of spoil
~500 acres subsided



Questions?

Ron Brockmeyer

rbrockmeyer@sjrwmd.com

386-329-4495

www.sjrwmd.com

Bringing Back our Coastal Wetlands

<https://storymaps.arcgis.com/stories/e4d0f606c20240999f92fa76fe9e6e86>



St. Johns River
Water Management District